

THE LOOKOUT 2.0

2018 SERIES – 2MP 30X PTZ WITH 500FT OF IR



FEATURES

- 1/3" Progressive Scan CMOS
- 2MP Resolution
- 4.5-135mm Lens
- 63-2.3° Viewing Angle
- 500 Ft. Night Vision
- IP66 Weatherproof
- IK10 Impact Resistant
- H.264 & H.265 Compatible

\$25.95/MONTH



SPECIFICATIONS

Camera and Image	
Image Sensor	1/3" Progressive scan CMOS
Max Resolution	1920 x 1080
Effective Pixels	2,073,600 Pixels
Frame Rate	30FPS @ 1080P
Lens	4.5-135mm @ F1.6, angle of view 63-2.3°
PTZ Tilt	Range: -15° ~ +90° - Speed: 0.1° ~ 160°/s (240°/s on presets)
Pan Speed	0.1°/s ~ 240°/s (Preset speed: 300°/s)
IR Distance	500FT
Minimum Illumination	0.03 lux (F1.6, AGC ON)
Electronic Shutter	Auto/Manual, 1/6~1/100000s
BLC	Backlight Compensation, Headlight Comp.
Wide Dynamic Range	Digital WDR
Noise Reduction	2D/3DNR
Communication	
Image Settings	Full picture customization via web browser
Communication Interface	1 RJ45 10M/100M Ethernet Interface
On Board Storage	MicroSD up to 128GB - (card not included)
Power and Dimensions	
Power Supply	24 V AC, 24 V DC, High PoE (PSE Required)
Power Consumption	9-42W
Weather Protection	IP66 Compliant
Operating Temperature	-40°F to 140°F at 95% Humidity (non condensing)
Dimensions	Ø8.9" x 14.2"
Weight	11.6lb

THE DEPUTY 8.0 V2



FEATURES

- 1/3" Progressive Scan CMOS
- 8MP Resolution
- 20FPS
- 2.8mm Lens
- 112° Viewing Angle
- 100 Ft. Night Vision
- IP67 Weatherproof
- Mac Support
- ONVIF Profile S/T

\$8.95/MONTH



4.6 Inches

SPECIFICATIONS

Camera and Image	
Image Sensor	1/3" Progressive scan CMOS
Max Resolution	3840×2160
Effective Pixels	8,294,400 Pixels
Frame Rate	8MP/4K (3840×2160): Max. 20 fps
Lens	2.8mm @ F2.0, angle of view ~112°
Camera Body Color	White
IR Distance	100ft
Minimum Illumination	0.05 lux @F2.0, AGC ON
Electronic Shutter	1/30s ~ 1/100,000s
White Balance	ATW
BLC	BLC with Zone Configurable Options
Wide Dynamic Range	True WDR @ 120dB
Noise Reduction	3DNR
Communication	
Image Settings	Full picture customization via web browser
Communication Interface	1 RJ45 10M/100M Ethernet Interface
Interoperability	ONVIF Conformant - Profiles S & T
Power and Dimensions	
Power Supply	DC 12V(±10%), PoE (802.3af)
Power Consumption	Max. 5.5W
Weather Protection	IP67 Compliant
Operating Temperature	(-22°F ~ 140 °F) Humidity 10 - 95% (non-condensing)
Dimensions	Φ4.6"×3.8"
Weight	.73lb

THE LOOKOUT 2.0 MINI

1080P 4X PTZ WITH BUILT IN TWO WAY AUDIO



FEATURES

- 1/2.8" P-Scan CMOS
- 1080p@30FPS Resolution
- 4x Zoom
- 2.8-12mm Lens
- 95.7-32.5° Viewing Angle
- Built in Mic & Speaker
- 165 Ft. Night Vision
- IP66 Weatherproof
- Mac Support
- ONVIF Profile S/G/T

\$14.95/MONTH



SPECIFICATIONS

Camera and Image	
Image Sensor	1/2.8" Progressive scan CMOS
Max Resolution	1920 x 1080
Effective Pixels	2,073,600 Pixels
Frame Rate	30FPS at 1080p
Lens	2.8-12mm - Angle of View: 95.7-32.5°
PTZ Specs	345° Pan Range,
IR Distance	165FT
Minimum Illumination	0.001 lux (F1.6,AGC ON) 0 lux with IR
Electronic Shutter	1/30s ~ 1/100,000s
White Balance	Auto white balance
BLC	BLC with Zone Configurable Options
Wide Dynamic Range	True 120dB WDR
Noise Reduction	3DNR
Communication	
Audio	Built in Microphone and Speaker
Communication Interface	1 RJ45 10M/100M Ethernet Interface
Interoperability	ONVIF Conformant - Profiles S, G & T
Power and Dimensions	
Power Supply	DC 12V±25%, PoE (IEEE802.3 at)
Power Consumption	Max. 16W
Weather Protection	IP66 Compliant
Operating Temperature	(-4°F ~ 140 °F) Humidity <95% (non-condensing)
Dimensions	Φ5.2"x 9.8"
Mount	Arm mount built in
Weight	2.49 pounds



NETWORK VIDEO RECORDER (NVR)

FEATURES

Create your own customizable record schedule, including recording based on the day of the week, hours of the day, or even choose not to record for periods of time. Set constant recording during business hours and only motion during closed hours.

The Channel size is the maximum amount of cameras you can have associated with the NVR.



PRODUCT

4 Channel NVR

8 Channel NVR

16 Channel NVR

32 Channel NVR

64 Channel NVR

128 Channel NVR

PRICE (MONTHLY)

\$9.95

\$11.95

\$24.95

\$29.95

\$120.95

\$320.95

HARD DRIVES

PRODUCT

1TB

2TB

4TB

6TB

10TB

PRICE (MONTHLY)

\$3.95

\$4.95

\$7.95

\$11.95

\$18.95



UNIFI MESH PRO ACCESS POINT

FEATURES

Expand your Wi-Fi network outdoors with the UniFi® AC Mesh Pro Access Point, part of the Ubiquiti Networks® UniFi Enterprise Wi-Fi System. The UAP-AC-M-PRO is a high-performance, outdoor, 3x3 MIMO, 802.11ac dual-band access point, capable of speeds of up to 1750 Mbps. It features a proprietary, MIMO-optimized, omni-directional Super Antenna for exceptional 360° coverage, providing symmetrical long-range communications of up to 183 meters.



\$8.95/MONTH

UBIQUITI AIRMAX 5GHZ NANOBEAM AC GEN 2V2

FEATURES

The newest Gen 2 5Ghz Nanobeam. Offering up to 450Mbps data link up to 9 miles apart. Requires clear line of sight (no trees, brush, or structures between antennas)

Price includes one antenna, two are required for operation.



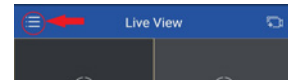
\$4.95/MONTH

SCW GO APP SETUP

Before you can set up SCW Go, search for and Install the SCW Go Application in the App Store.

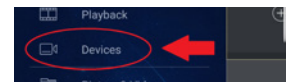
STEP 1:

Hit the menu icon on the top left corner of the screen (circled in the photo).



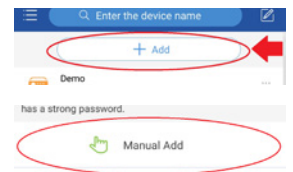
STEP 2:

Select devices.



STEP 3:

Hit the "Plus" "Add" button in the middle and then select manual add. If you are editing your DDNS/Device, open your existing device.



STEP 4:

Hit Manual Add.

STEP 5:

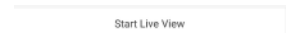
Fill the following settings out as in the image, Change "Address" to reflect the domain given to you by your SCW Tech, which should be ending in *.scw-ddns.com Fill in your username and password.

Name	Demo
Address	admiraldemo.scw-ddns.com
Port	80
Username	admin
Password	*****

Once this info is filled in hit the save button at the top right (circled in orange).

STEP 6:

After a short loading time, you should see the "Start Live View" button.



STEP 7:

Enjoy the cameras. You can double-tap to view full-screen.



For the video tutorial visit <https://vimeo.com/287462721>



CAMERA INSTRUCTIONS FOR SMARTPHONE OR TABLET

1. Download the SCW Go App on your device
2. Once the App is download click into the App
3. Hit the Try Now Button
4. No Device has been added hit OK
5. Click on the menu in the upper-left corner
6. Click on Devices
7. Click on (+) Add
8. Manual Add
9. Name: Enter your Last Name
 - a. Address:
 - b. Port: 80
 - c. Username:
 - d. Password:
 - e. Streaming Media Pro: Default
 - f. Live View: Auto
 - g. Playback: Low
10. Hit Start live View at the Bottom

HOW TO ACCESS CAMERAS ON A COMPUTER OR LAPTOP

1. Must be Internet Explorer
2. Go into Internet Explorer
3. Go to the top HTTP Link
4. Clear out the URL
5. Type in your Public IP Address that was given to you in the URL: look this up at ipchicken.com
6. Username:
Password:
7. Hit Login
8. Bottom Left Corner Hit the Play Button (Start Live View)
9. *May have to Install the latest plug-in on computer