

# THE LOOKOUT 2.0

2018 SERIES – 2MP 30X PTZ WITH 500FT OF IR



## FEATURES

- 1/3" Progressive Scan CMOS
- 2MP Resolution
- 4.5-135mm Lens
- 63-2.3° Viewing Angle
- 500 Ft. Night Vision
- IP66 Weatherproof
- IK10 Impact Resistant
- H.264 & H.265 Compatible

**\$25.95/MONTH**



## SPECIFICATIONS

Camera and Image	
Image Sensor	1/2.8" Progressive scan CMOS
Max Resolution	1920x1080
Effective Pixels	2,073,600 Pixels
Frame Rate	60FPS @ 1080p
Lens	4.5-148mm, 56-2.6°
IR Distance	500FT
Minimum Illumination	0.001Lux (F1.5, AGC ON)
Electronic Shutter	Auto/Manual 1 ~ 1/100000s
Wide Dynamic Range	True WDR @ 120dB
PTZ Specs	
Pan Range & Speed	360° (Endless) 0.1°/s ~ 200°/s
Tilt Range & Speed	-15° ~ 90° (auto reverse) 0.1°~ 200°/s
Preset Speed	300°S Pan - 240°/s Tilt
Presets	Up to 1024
Communication	
Image Settings	Full picture customization via web browser
Communication Interface	1 RJ45 10M/100M Ethernet Interface
Interoperability	ONVIF Conformant - Profiles S, T, G
Onboard Storage	MicroSD up to 256GB (card not included)
Power and Dimensions	
Power Supply	AC 24V(±25%), High PoE, PSE Required/Included
Power Consumption	Max. 48W
Weather Protection	IP66 Compliant
Operating Temperature	(-40°F ~ 140 °F) Humidity <95% (non-condensing)
Dimensions	Ø8.9" x 15.1"
Weight	11.68lb

# THE DEPUTY 8.0 V3



## FEATURES

- 1/2.7" P-Scan CMOS
- NDAA Approved M-Star CPU
- 8mp Resolution
- 20FPS
- 2.8mm Lens
- 112 Viewing Angle
- Built in Microphone
- 100 Ft. Night Vision
- IP67 Weatherproof
- Mac Support
- ONVIF Profile S/T

**\$8.95/MONTH**



## SPECIFICATIONS

Camera and Image	
Image Sensor	1/2.7" Progressive scan CMOS
Max Resolution	3840 x 2160
Effective Pixels	8,294,400 Pixels
Frame Rate	20PS
Lens	2.8mm @ F2.0, angle of view ~105°
Camera Body Color	White
IR Distance	100ft
Minimum Illumination	0.01 lux @F2.0
Electronic Shutter	Auto/Manual, 1 ~ 1/100000s
BLC	BLC with Zone Configurable Options
Wide Dynamic Range	Digital WDR
Noise Reduction	3DNR
Communication	
Onboard Storage	MicroSD - Up to 256GB (Card not included)
Communication Interface	1 RJ45 10M/100M Ethernet Interface
Interoperability	ONVIF Conformant - Profiles S & T
Certifications	FCC / UL / CE / NDAA Approved
Audio	Built in Mic (One Way Audio)
Power and Dimensions	
Power Supply	DC 12V(±10%), PoE (802.3af)
Power Consumption	Max. 5W
Weather Protection	IP67 Compliant
Operating Temperature	(-22°F ~ 140 °F) Humidity <95% (non-condensing)
Dimensions	Φ4.6" x 3.8"
Weight	.75Lbs

# THE LOOKOUT 5.0 MINI

1080P 4X PTZ WITH BUILT IN TWO WAY AUDIO



## FEATURES

- 1/2.7" P-Scan CMOS
- NDAA M-Star CPU
- 5MP@30FPS Resolution
- 4x Zoom
- 2.8-12mm Lens
- 104-30.6 Viewing Angle
- Built in Mic & Speaker
- Built in strobe light
- Audio warnings
- 165 Ft. Night Vision
- 30 Ft. White Light
- IP66 Weatherproof
- ONVIF Conformant

\$14.95/MONTH



## SPECIFICATIONS

Camera and Image	
Image Sensor	1/2.7" Progressive scan CMOS
Max Resolution	2880x1620
Effective Pixels	4,665,600 Pixels
Frame Rate	30FPS at 5MP
Lens	2.8-12mm - Angle of View: 104.1-30.6°
PTZ Specs	345° Pan Range
IR Distance	165FT
Minimum Illumination	0.003 lux (F1.6,AGC ON) 0 lux with IR
Electronic Shutter	1 s ~ 1/100000 s
BLC	BLC with Zone Configurable Options
Wide Dynamic Range	True 120dB WDR
Noise Reduction	3DNR
Communication / Alerts	
Audio	Built in Microphone and Speaker
Communication Interface	1 RJ45 10M/100M Ethernet Interface
Interoperability	ONVIF Conformant
Active Deterrence	Audio Warnings, Red/Blue light, White Light
Alerts set by	VCA Intrusion Detection / Cross Line
Power and Dimensions	
Power Supply	DC 12V±25%, PoE (IEEE802.3 at)
Power Consumption	Max. 18W
Weather Protection	IP66 Compliant
Operating Temperature	(-4°F ~ 140 °F) Humidity <95% (non-condensing)
Dimensions	Φ5.2"x 10.6"
Mount	Arm mount built in
Weight	2.49 pounds

# The Watchkeeper 4.0 v2

4MP 25X LONG RANGE NDAA APPROVED PTZ



## FEATURES

- 1/2.8" Progressive Scan CMOS
- NDAA Approved M-Star CPU
- 4MP Resolution
- 30FPS
- 25x Zoom
- PoE+
- 4.8-120mm Motorized Lens
- 52-2.7° Angle of View
- 325Ft. IR Night Vision
- Audio and Alarm I/O
- IP67 Weatherproof
- ONVIF Profile S/T/G

**\$22.95/MONTH**



## SPECIFICATIONS

Camera and Image	
Image Sensor	1/2.8" Progressive scan CMOS
Max Resolution	2688x1520
Effective Pixels	4,085,760 Pixels
Frame Rate	30FPS @ 4MP
Lens	4.8-120mm, 52.20 - 2.74°
IR Distance	325FT
Minimum Illumination	0.003 Lux (F1.5, AGC ON)
Electronic Shutter	Auto/Manual 1 ~ 1/100000s
Wide Dynamic Range	True WDR @ 120dB
PTZ Specs	
Pan Range & Speed	360° (Endless) 0.1°/s ~ 200°/s
Tilt Range & Speed	-15° ~ 90° (auto reverse) 0.1°~ 120°/s
Preset Speed	240°S Pan - 200°/s Tilt
Presets	Up to 1024
Communication	
Communication Interface	1 RJ45 10M/100M Ethernet Interface
Interoperability	ONVIF Conformant - Profiles S, T, G
Onboard Storage	MicroSD up to 256GB (card not included)
Power and Dimensions	
Power Supply	DC12V(±25%) 3A - PoE+ (802.3at) injector not required or included. Ensure your PoE switch or NVR can provide adequate power.
Power Consumption	Max. 21W
Weather Protection	IP67 Compliant
Operating Temperature	(-40°F ~ 158 °F) Humidity <95% (non-condensing)
Dimensions	Ø6.5" x 11.6"
Weight	6.72lb



# NETWORK VIDEO RECORDER (NVR)

## FEATURES

Create your own customizable record schedule, including recording based on the day of the week, hours of the day, or even choose not to record for periods of time. Set constant recording during business hours and only motion during closed hours.

**The Channel size is the maximum amount of cameras you can have associated with the NVR.**



### PRODUCT

4 Channel NVR

8 Channel NVR

16 Channel NVR

32 Channel NVR

64 Channel NVR

128 Channel NVR

### PRICE (MONTHLY)

\$9.95

\$11.95

\$24.95

\$29.95

\$120.95

\$320.95

# HARD DRIVES

### PRODUCT

1TB

2TB

4TB

6TB

10TB

### PRICE (MONTHLY)

\$3.95

\$4.95

\$7.95

\$11.95

\$18.95



# UNIFI MESH PRO ACCESS POINT

## FEATURES

Expand your Wi-Fi network outdoors with the UniFi® AC Mesh Pro Access Point, part of the Ubiquiti Networks® UniFi Enterprise Wi-Fi System. The UAP-AC-M-PRO is a high-performance, outdoor, 3x3 MIMO, 802.11ac dual-band access point, capable of speeds of up to 1750 Mbps. It features a proprietary, MIMO-optimized, omni-directional Super Antenna for exceptional 360° coverage, providing symmetrical long-range communications of up to 183 meters.

\$8.95/MONTH



# UBIQUITI NANOSTATION AC

## FEATURES

The NanoStation AC get maximum gain out of the smallest footprint. The low cost, high performance, and small form factor of the NanoStation AC make them extremely versatile and economical to deploy.

Requires clear line of sight (no trees, brush, or structures between antennas)  
Prince includes one antenna, two are required for operation.

\$4.95/MONTH





# SCW GO APP SETUP

Before you can set up SCW Go, search for and Install the SCW Go Application in the App Store.

## STEP 1:

Hit the menu icon on the top left corner of the screen (circled in the photo).

## STEP 2:

Select devices.

## STEP 3:

Hit the "Plus" "Add" button in the middle and then select manual add. If you are editing your DDNS/Device, open your existing device.

## STEP 4:

Hit Manual Add.

## STEP 5:

Fill the following settings out as in the image, Change "Address" to reflect the domain given to you by your SCW Tech, which should be ending in \*.scw-ddns.com Fill in your username and password.

Once this info is filled in hit the save button at the top right (circled in orange).

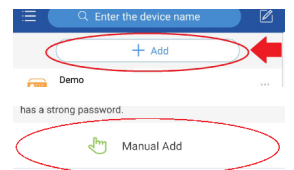
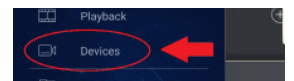
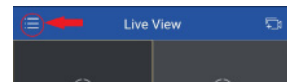
## STEP 6:

After a short loading time, you should see the "Start Live View" button.

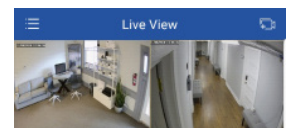
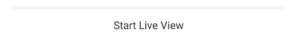
## STEP 7:

Enjoy the cameras. You can double-tap to view full-screen.

For the video tutorial visit <https://vimeo.com/287462721>



Name	Demo
Address	admiraldemo.scw-ddns.com
Port	80
Username	admin
Password	*****





## CAMERA INSTRUCTIONS FOR SMARTPHONE OR TABLET

1. Download the SCW Go App on your device
2. Once the App is download click into the App
3. Hit the Try Now Button
4. No Device has been added hit OK
5. Click on the menu in the upper-left corner
6. Click on Devices
7. Click on (+) Add
8. Manual Add
9. Name: Enter your Last Name
  - a. Address:
  - b. Port: 80
  - c. Username:
  - d. Password:
  - e. Streaming Media Pro: Default
  - f. Live View: Auto
  - g. Playback: Low
10. Hit Start live View at the Bottom

## HOW TO ACCESS CAMERAS ON A COMPUTER OR LAPTOP

1. Must be Internet Explorer
2. Go into Internet Explorer
3. Go to the top HTTP Link
4. Clear out the URL
5. Type in your Public IP Address that was given to you in the URL: look this up at [ipchicken.com](http://ipchicken.com)
6. Username:  
Password:
7. Hit Login
8. Bottom Left Corner Hit the Play Button (Start Live View)
9. \*May have to Install the latest plug-in on computer